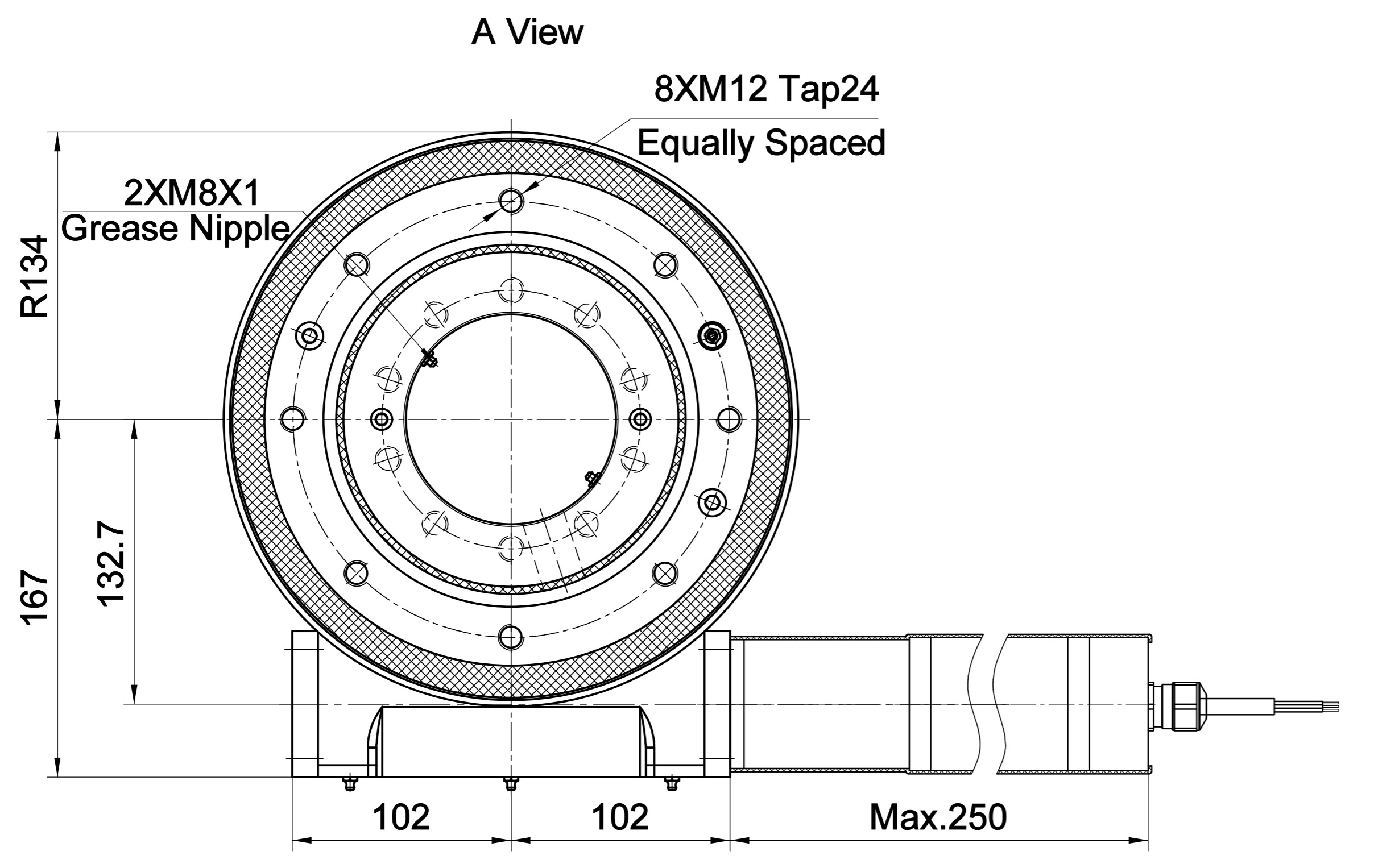
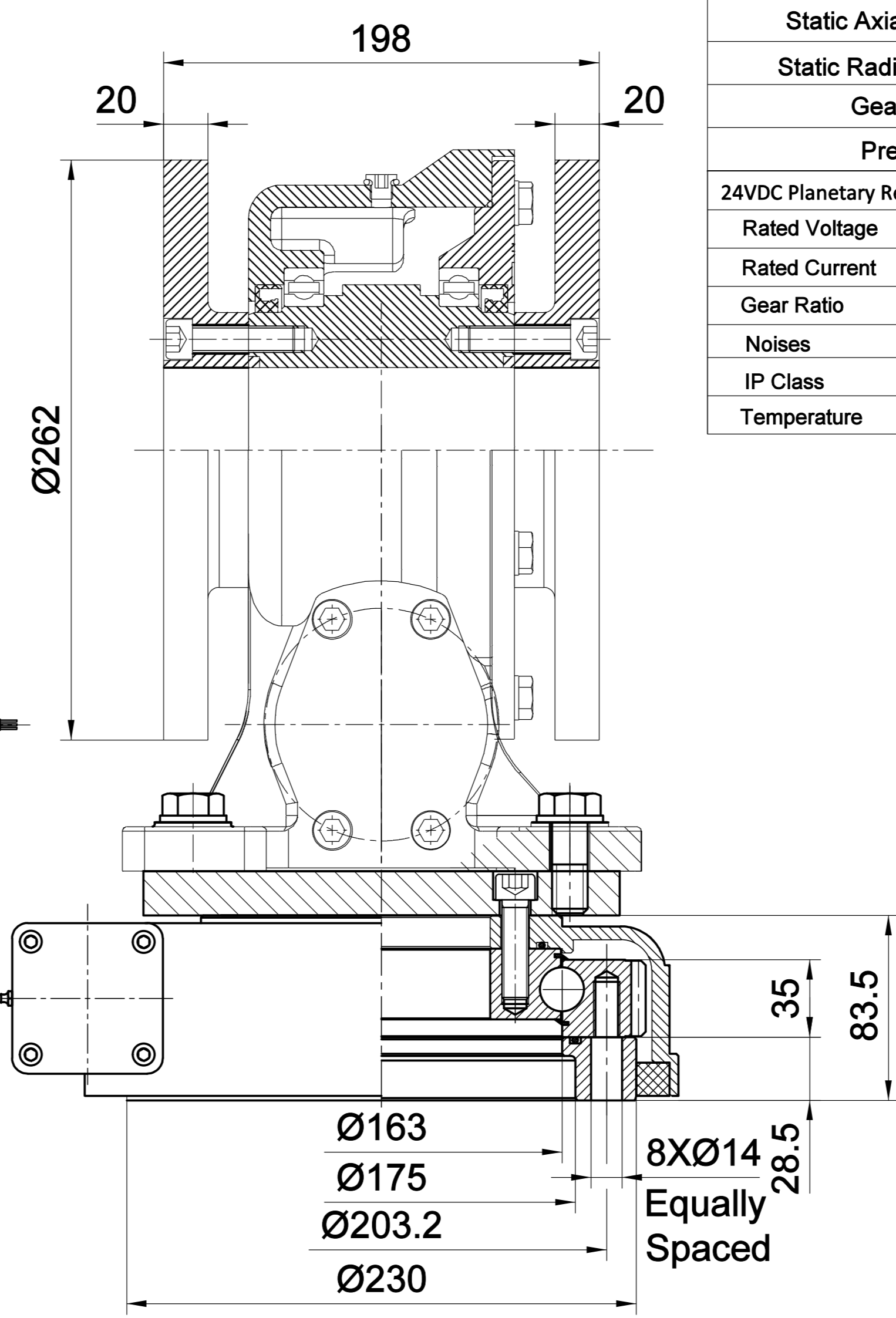
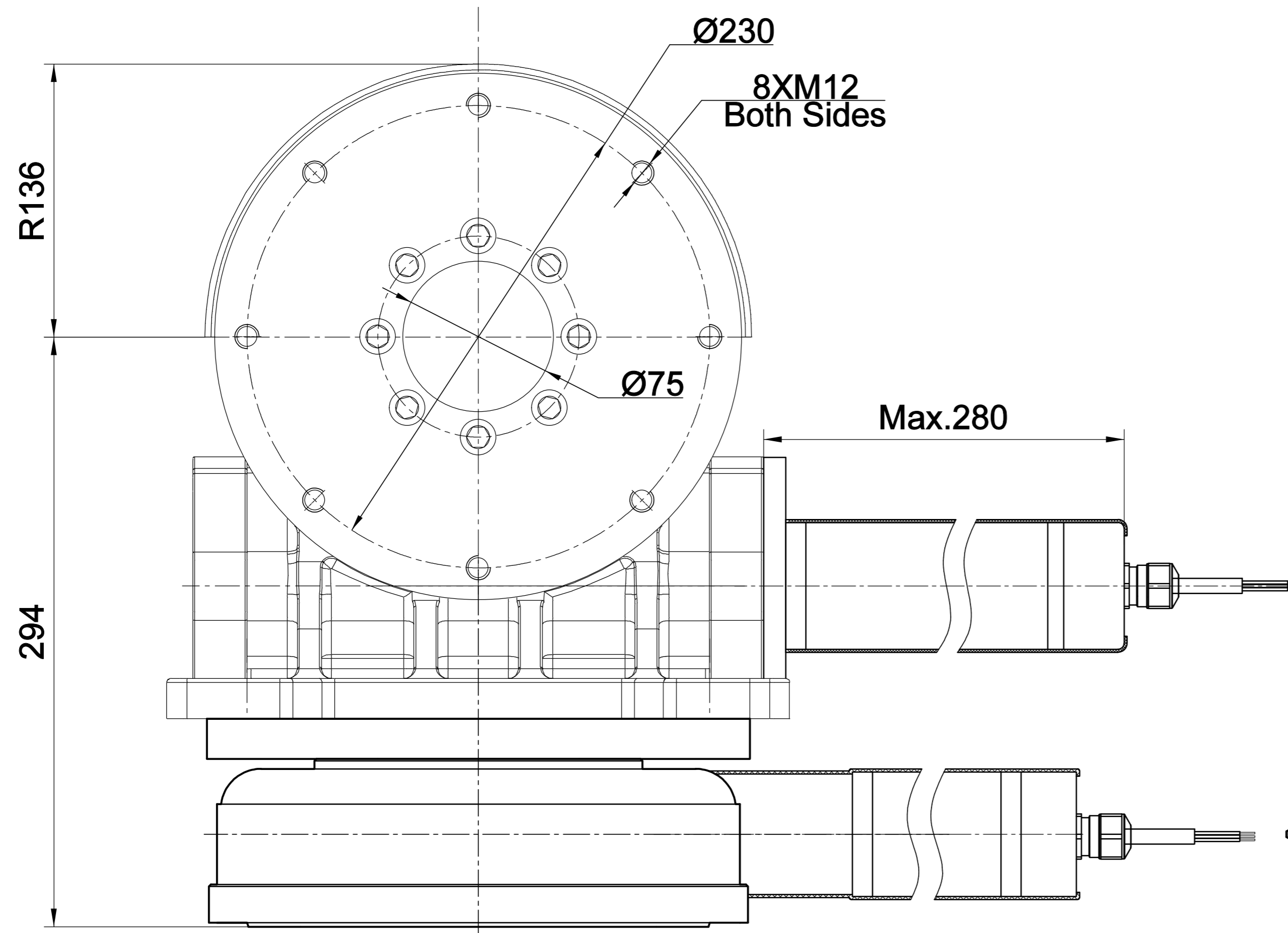
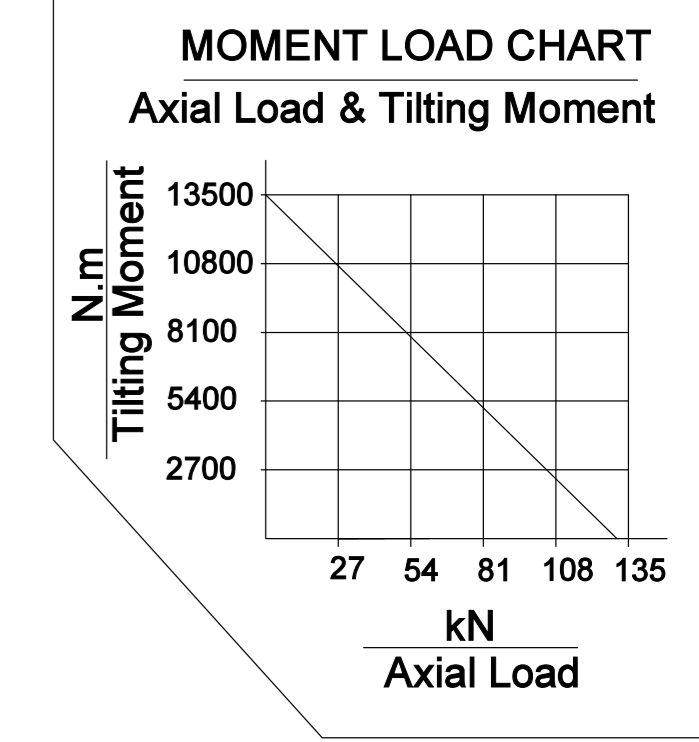
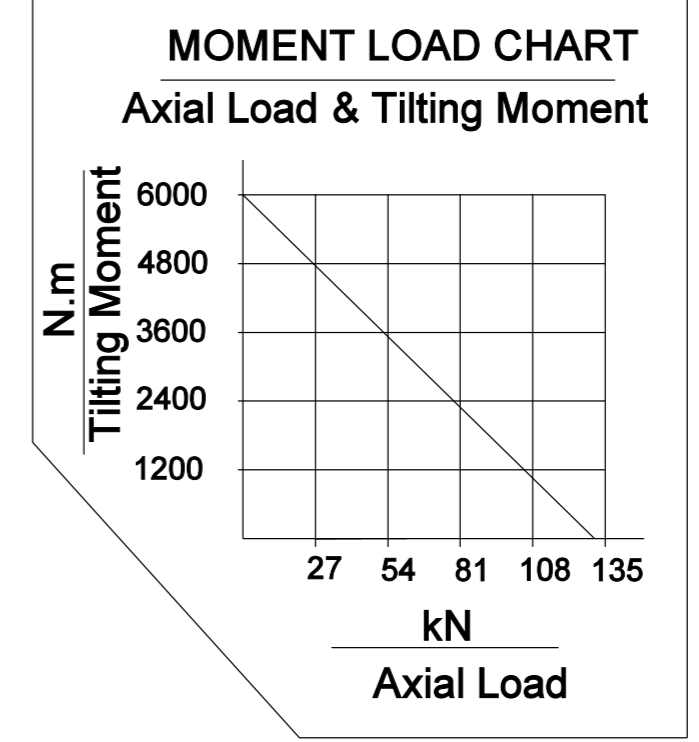
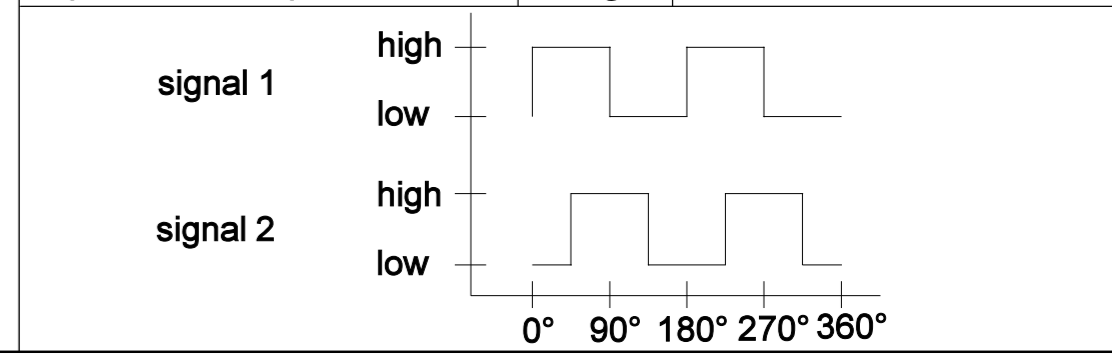


Slewing Drive Performance Parameters(Elevation direction)		Slewing Drive Performance Parameters(Horizontal)	
Rated Output Speed	0.04 rpm	Rated Output Speed	0.055 rpm
Output Torque	703N.m	Output Torque	1650N.m
Tilting Moment	13500 N.m	Tilting Moment	13500 N.m
Holding Torque	10400 N.m	Holding Torque	38700 N.m
Static Axial Load Rating	133 kN	Static Axial Load Rating	135 kN
Static Radial Load Rating	53 kN	Static Radial Load Rating	75.8 kN
Gear Ratio	71:1	Gear Ratio	55:1
Precision	≤ 0.2 °	Precision	≤ 0.2 °
24VDC Planetary Reducer Motor Performance Data (24H/30/33)		24VDC Planetary Reducer Motor Performance Data (24H/30/100)	
Rated Voltage	24 VDC	Rated Voltage	24 VDC
Rated Current	<2.5 A	Rated Current	<3.6 A
Gear Ratio	580 : 1	Gear Ratio	782.4 : 1
Noises	≤65 dB	Noises	≤65 dB
IP Class	IP65	IP Class	IP65
Temperature	-40 - +60°C	Temperature	-40 - +60°C



MAGNETIC PULSE GENERATOR DATA		
Output type	-	voltage output
pull-up resistor	-	yes
Output signal	-	2 square wave signals
Phase quadrature	-	90°
Impulses per revolution	ppr	2,channels A and B
Operating voltage	VDC	UN=12(5... 24)
Operating current	mA	max. 12 (U=12V)
Deviation of pulse width	-	max. 15°
Deviation of phase shift	-	max. 15°
Output voltage(low level)	VDC	max. 0.4 (20mA)
SIGNAL RISE TIME	ns	85
SIGNAL DECAY TIME	ns	60
Operation temperature	°C	-40 ... +85

Wire Define:
 Pin 1 (black) motor -
 Pin 2 (red) motor +
 Pin 3 (gray) Hall -
 Pin 4 (brown) Hall +
 Pin 5 (blue) Hall A
 Pin 6 (orange) Hall B
 Pin E (green) GND



REV.	Date	Reviser	Description		
Designed By	2016.1.12	HXL			
Checked By	2016.1.12	CQN			
Approved By	2016.1.12	HW			
The information contained in the document is property of SunSlew. SunSlew reserve changes of manufacture without previous advice and duty of communication. It is not allowable any copy or reproduction of this certificated copy with the original not under control.			WEIGHT	SCALE	SDDL7-D5571-RC-24H3100.33
				1:4	
SYMBOLS ISO		SIZE SHEET	A3 1/1	REV A	